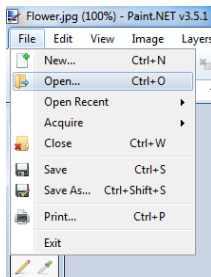


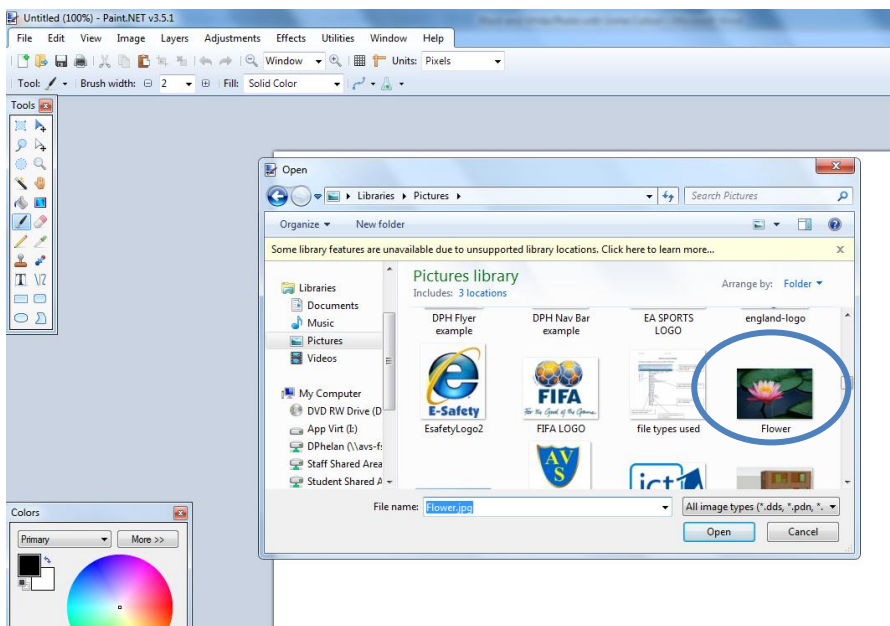


Software: Paint.net
Or another image editing software

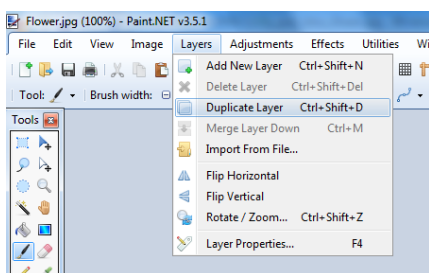
Black and White Photo with Some Colour



Open Paint.NET click on 'file', 'open' and select the image you want to edit.

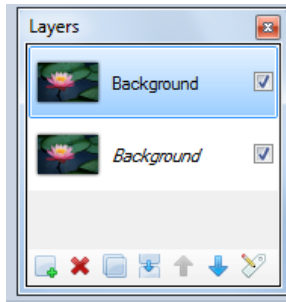


Select the image and click 'open'.

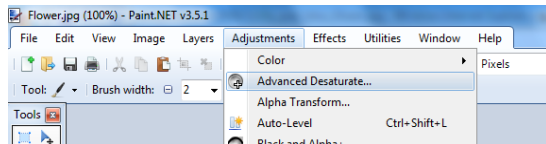


Once the image is open select 'layers' and then 'duplicate layer' or press Ctrl+Shift+D

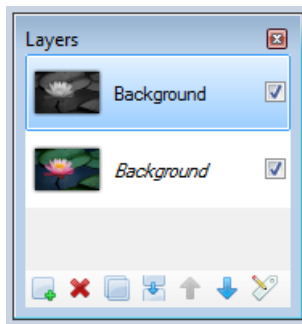
Photo Editing



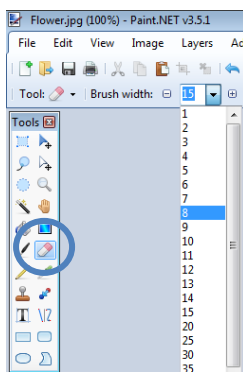
On the layers window make sure you are working on the top layer



Click on 'adjustments' and then 'advanced desaturate' and click 'ok'

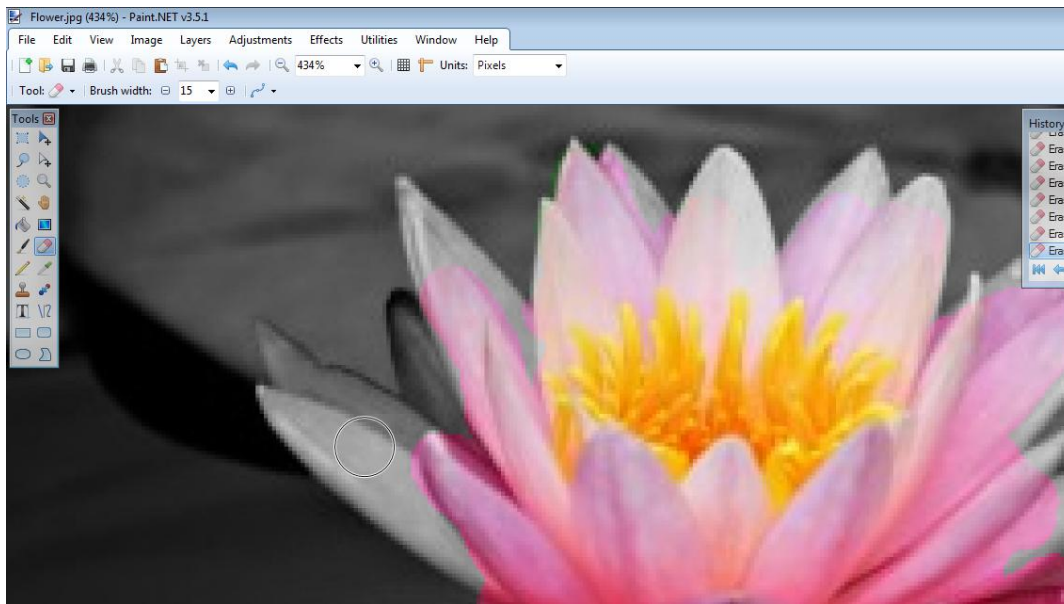


The top layer should then be black and white and the bottom layer full colour

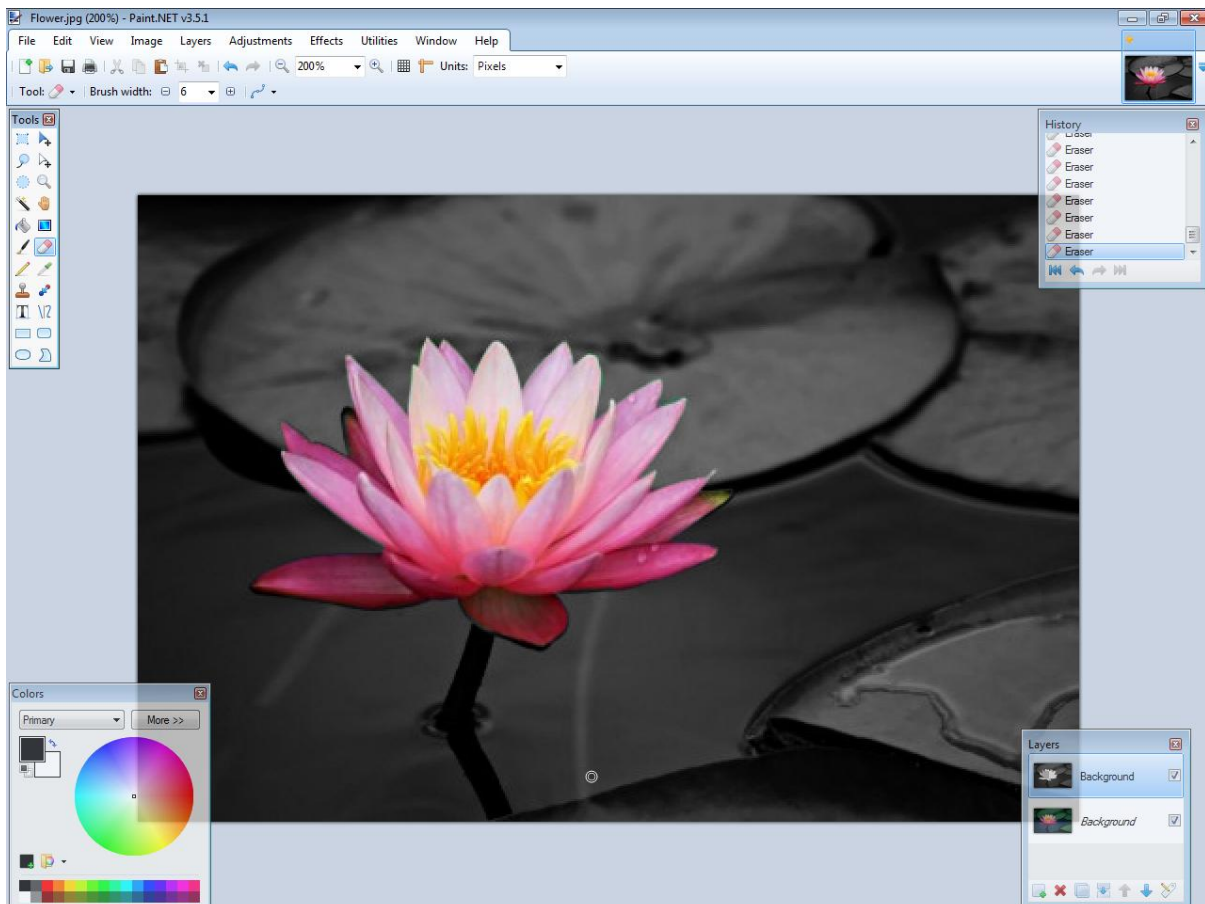


Select the eraser tool and an appropriate brush width

Photo Editing

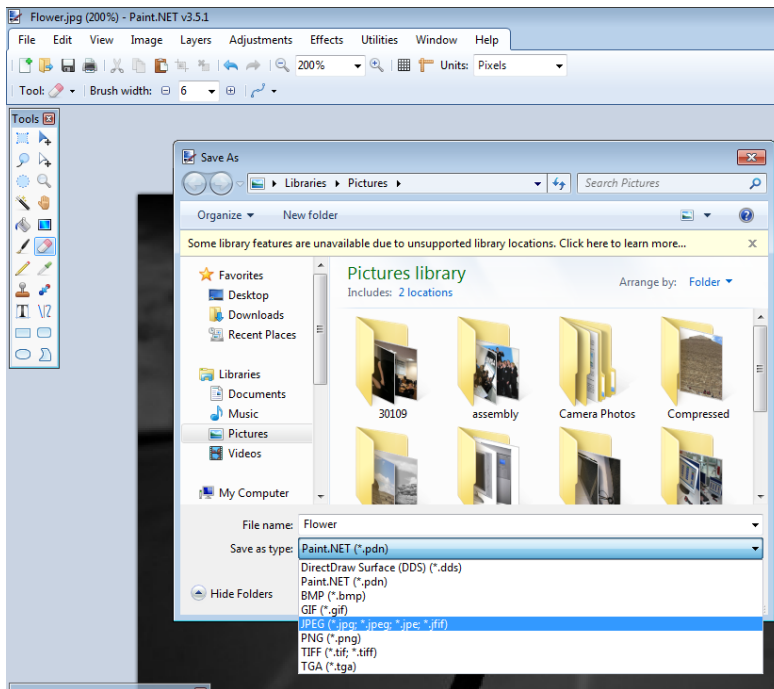


Zoom in (Ctrl +) and use the eraser tool rub out the sections of the black and white image you don't want.



The end result

Photo Editing



To save click on 'file', 'save as', give the file a name and set the file type as a .JPEG