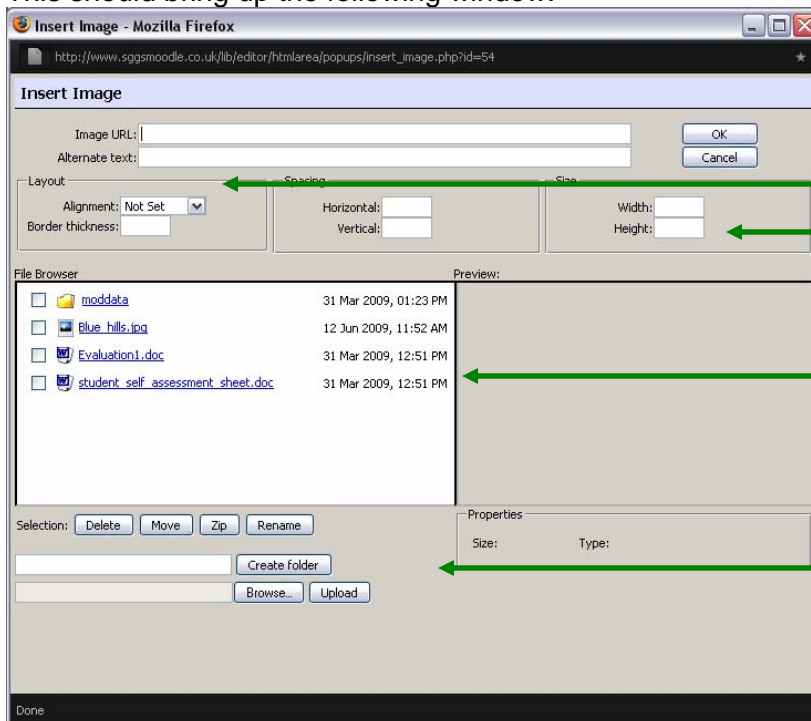


Inserting images into Wiki pages on a Moodle.

To insert an image into a Wiki page you need to select the insert image button from the toolbar:



This should bring up the following window:



This is where you adjust the image size, the alignment and a border.

Uploaded images (these are the images you can select from to insert).

This is where you can browse for your own images to upload to the Moodle.

1. First you will need to browse for the image you wish to insert. Click on the 'Browse' button near the bottom of the window.
2. Find the image you wish to upload and select 'OK'.
3. You then need to click on 'Upload' to upload your image to the Moodle; your image should then appear in the list on the left.
4. Click on the name of the image you wish to insert (in blue) and it should load information into the image URL box at the top of the screen.
5. It will also display the size of the image in the Width and Height boxes; your image may be very large and you can resize it here (HINT: A typical image size in a Wiki page is about **320 Width and 240 Height**).
6. You can also set the alignment with the 'Alignment' drop-down box and type a number into the 'Border Thickness' box to give your image an outline (HINT: about **2 is a standard border thickness**).
7. Lastly, you will need to enter some 'alternative text' for people who can not view images in their browser (i.e. "picture of a beach").
8. Click 'OK' at the top when you are ready to insert your image.