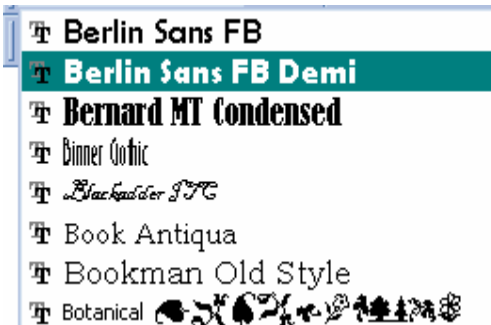


Computer *Cyfrifiadur*



Font

Ffont



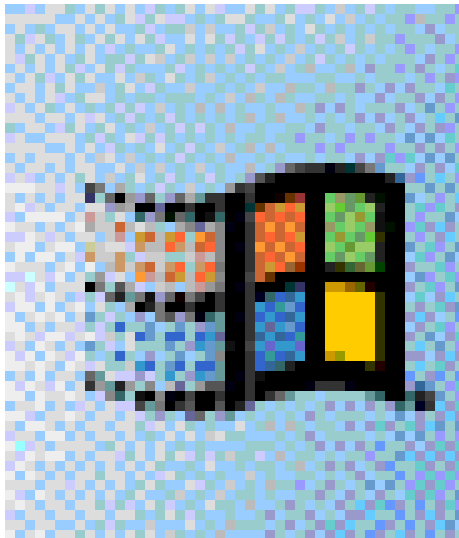
Style of the Print that you use.

You can also change the size or

- **Embolden**
- Underline
- *Italics*

Microsoft Windows

Ffenestri Microsoftt



An operating system that is
Commonly used across the world

Different varieties

Windows XP

Windows 98

Windows 2000

Windows NT

Compact Disk *Disg Crynno*



A CD is a device that stores and transports data. A typical CD holds 700MB of data

This is the same as 486 Floppy Disks

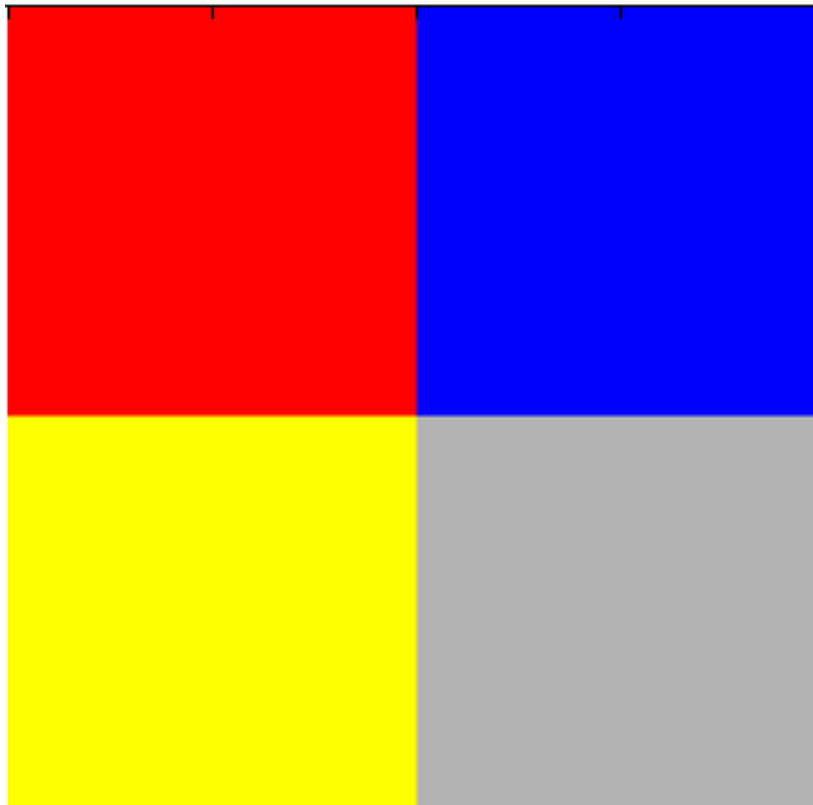
DVD DFD



A DVD is a device that stores and transports data. A typical DVD holds 4.7GB of data

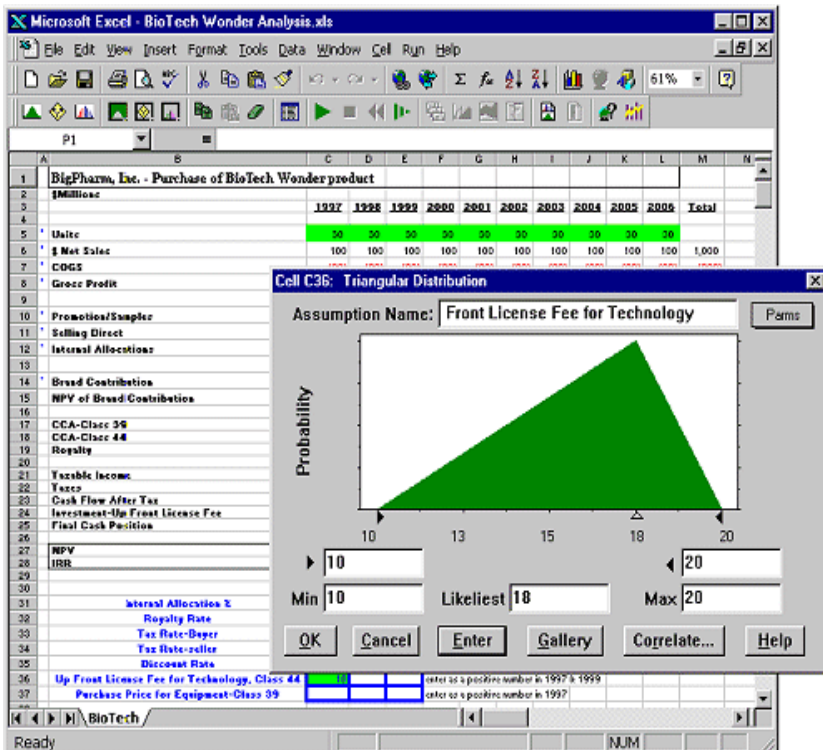
This is the same as 3342 Floppy Disks or 7 CDs

Pixel *Picse*l



A Pixel is a single dot on a monitor or similar output device

Spreadsheet *Teinlen*



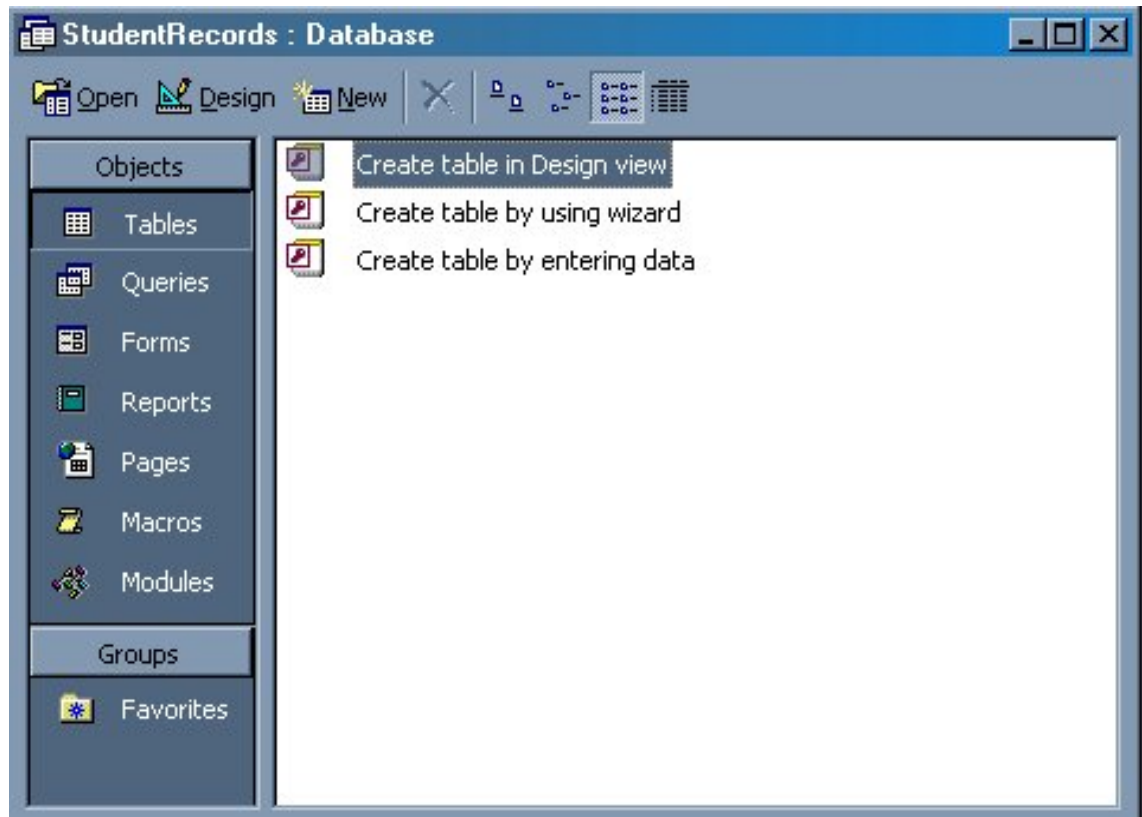
A piece of software that allows you to manipulate numbers

You can perform a whole range of operations in a spreadsheet very simply

I.E. Average, addition, subtraction, division, Adding up a long list of numbers, etc.

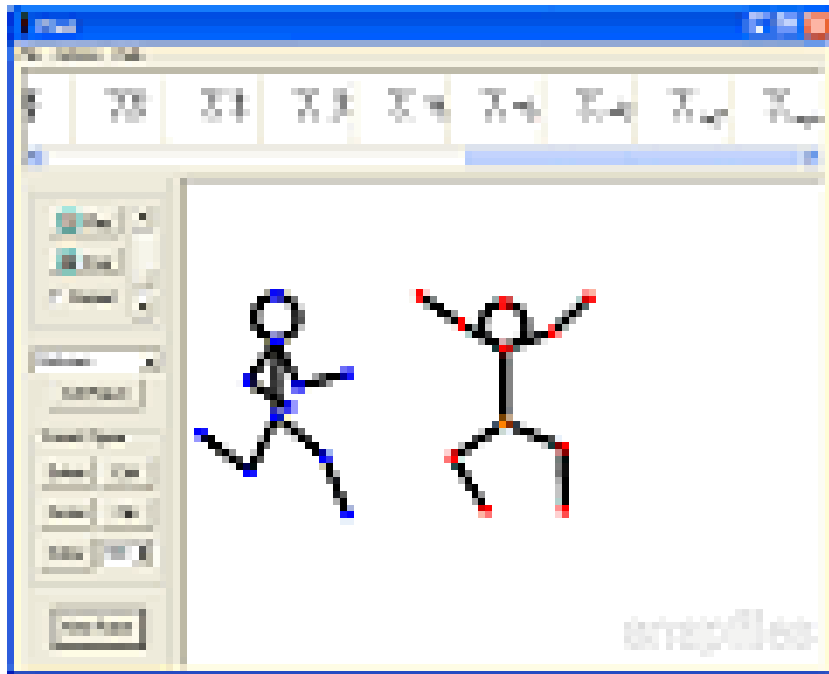
Database

Bas Data



A piece of software that will allow you to store, search, sort data very simply.

Amination *Bywiogrwydd*



Moving
pictures/Text

A feature you all
like to use in
Microsoft
PowerPoint

E-Mail

E-Bost

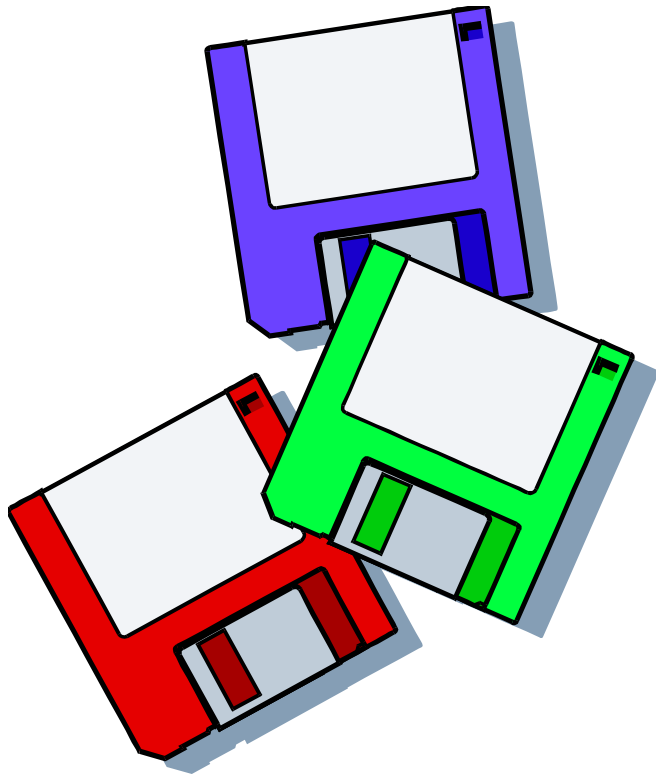


A message that can be sent to another person anywhere in the world who has access to a computer

You can add attachments and sent people music, pictures, letters, movies, absolutely anything saved on a PC, even VIRUSES

Floppy Disk

Disg Fflopi



A Floppy Disk is a device that stores and transports data. A typical Disk holds 1.44MB of data

Memory Stick *Ffon Côf*



A Memory Stick is a device that stores and transports data. A typical Stick holds anything between 16MB to 8GB

File

Ffeil

When you save you work you are storing it in a file. Each file has a name.



GCSE Project



GLD Web
entry page



hs_err_pid300



New Accounts



Normalisati...



Notification...

Folder *Ffowder*



alevel



Application
Data



BWACC-CO...



Cyberlink



K53



letters



MEM STICK
BACKUP ...



My eBooks

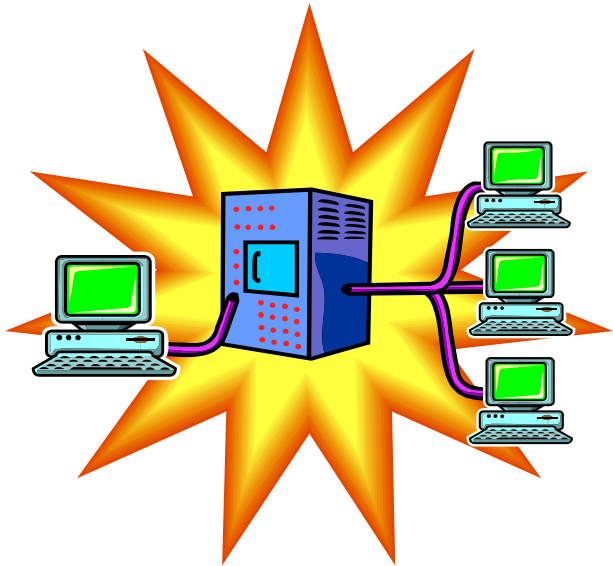
You can organise
your files into
folders to make
them easier to find.

Internet *Rhyngrhwyd*



The Internet allows the WWW (World Wide Web) to operate. It is all the computers connected together that allows you to access the information on the WWW

Network *Rhwydwaith*

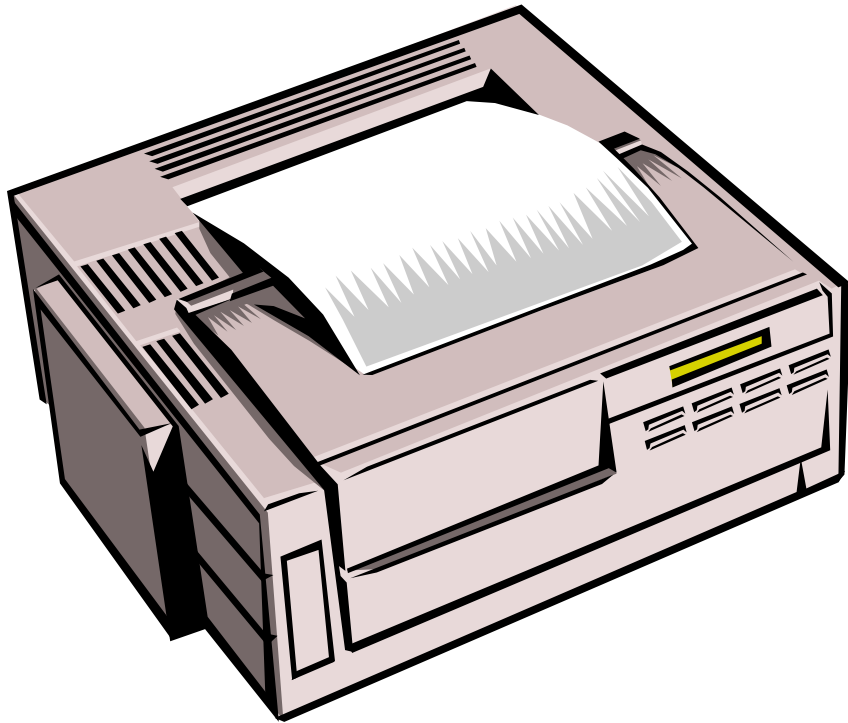


A computer network is a collection of computers connected together.

We network computers because we can then share resources I.E. Printers, files, etc.

Printer

Argraffydd



An Output device that allows us to create a 'Hard' copy of our work.

Scanner

Sganer



An Input device that allows to scan an image into a computer then user can edit it

Some scanners have OCR (Optical Character recognition) this allows the user to edit text that has been scanned.

Mega Byte (MB)

1 MB equals:

1000KB

Or 1000,000B

Giga Byte (GB)

1 GB equals:

1000MB

Or 1000,000KB

Or 1000,000,000B

Kilo Byte (KB)

1 KB equals:

1000B

Byte (b)

A Byte is equal to 1 character of information stored on a Computer.

The Byte is made up of 8 Bits all equal to 1 or 0 I.E.
00110011

Mouse

Llygoden



A mouse is an input device that allows to move your pointer around the screen and select what you want via clicking

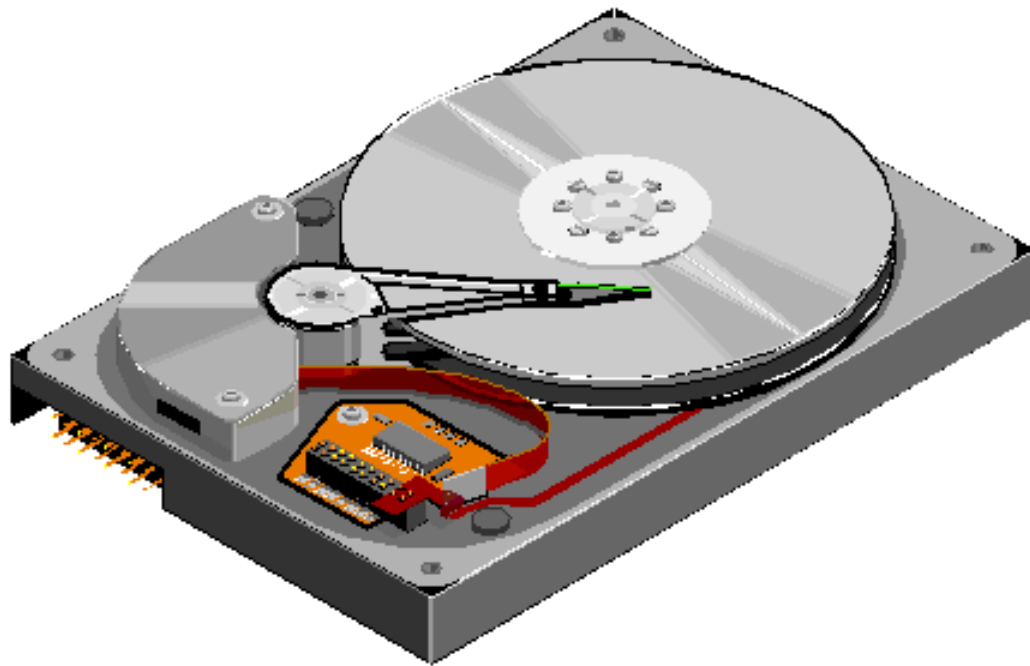
Keyboard

Bysellfwrdd/Allweddell



An input device that allows you to enter text into a PC.

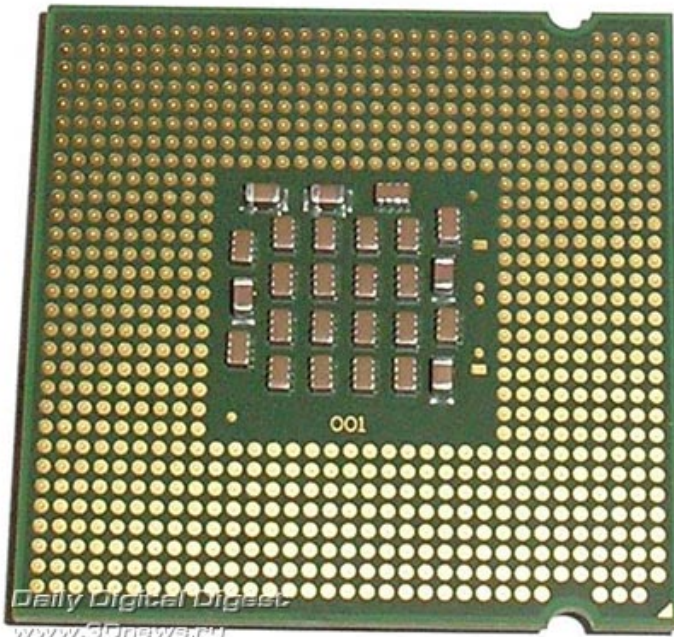
Hard Disk *Disg Caled*



A device that stores all the data on your PC.

Processor

Gweithredydd



A processor is the 'Brain' of a computer. The faster the processor the faster you computer operates

A Processor speed is measured in Hz

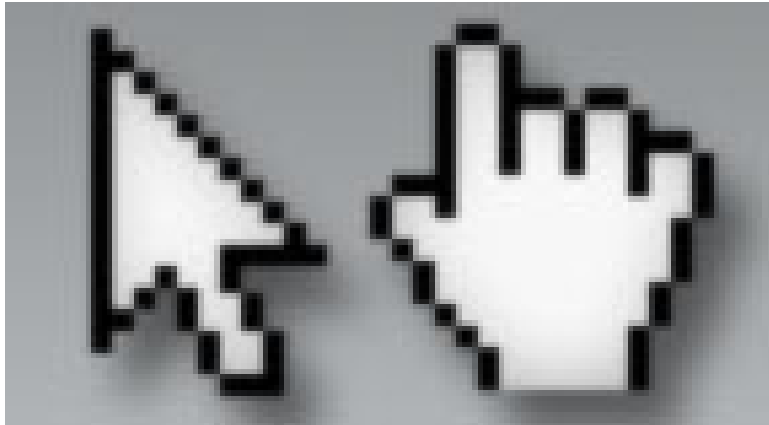
Interface

The interface is the way in which you interact with a computer



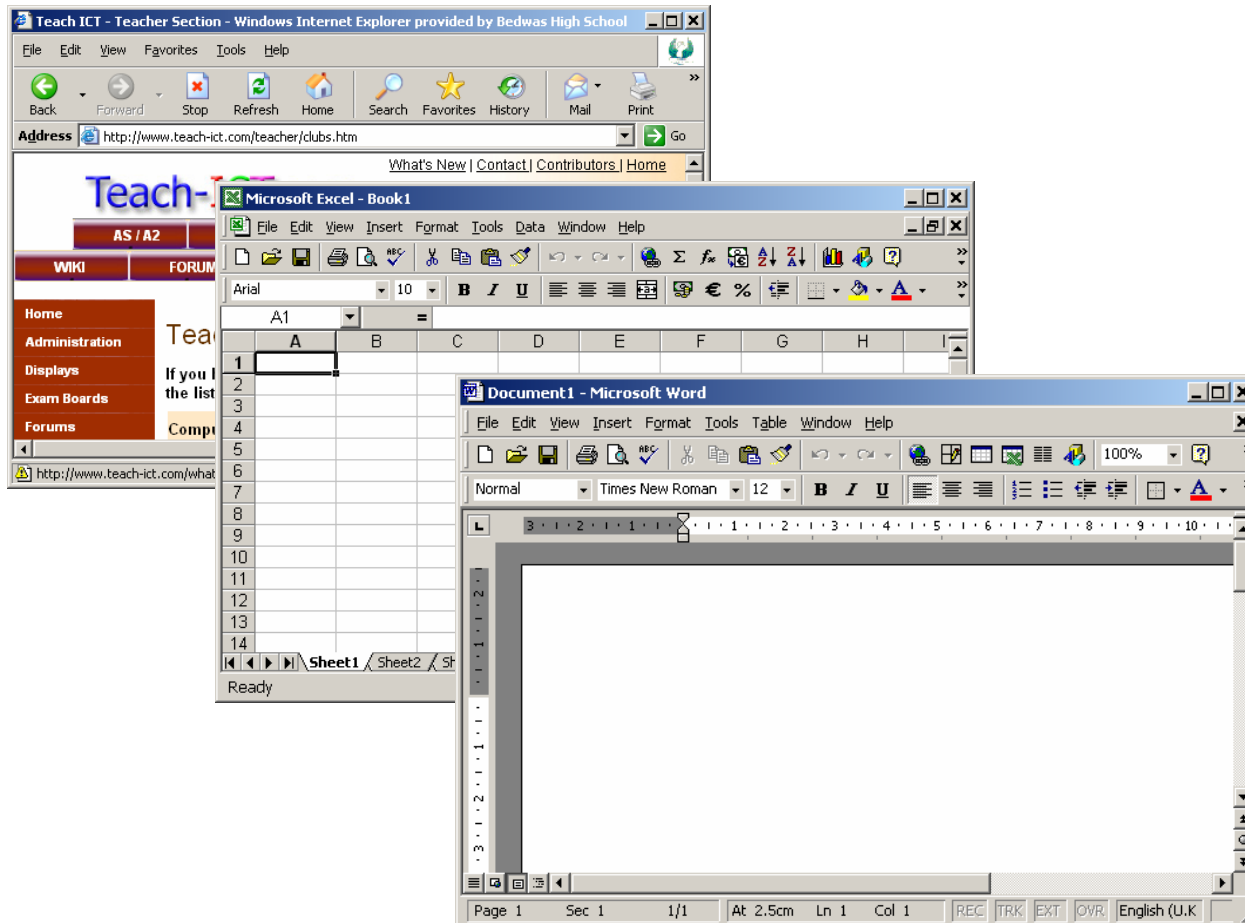
Pointer

Pwyntydd



The pointer is what you move around the screen using the mouse.

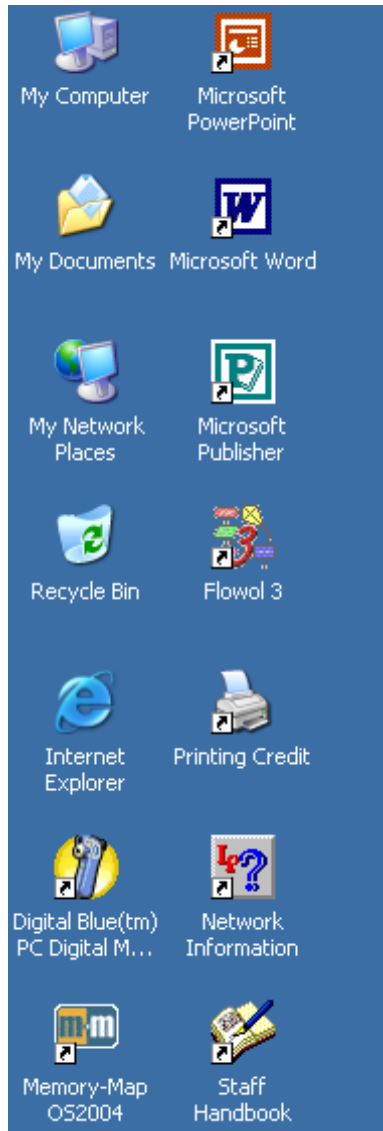
Windows *Ffenestri*



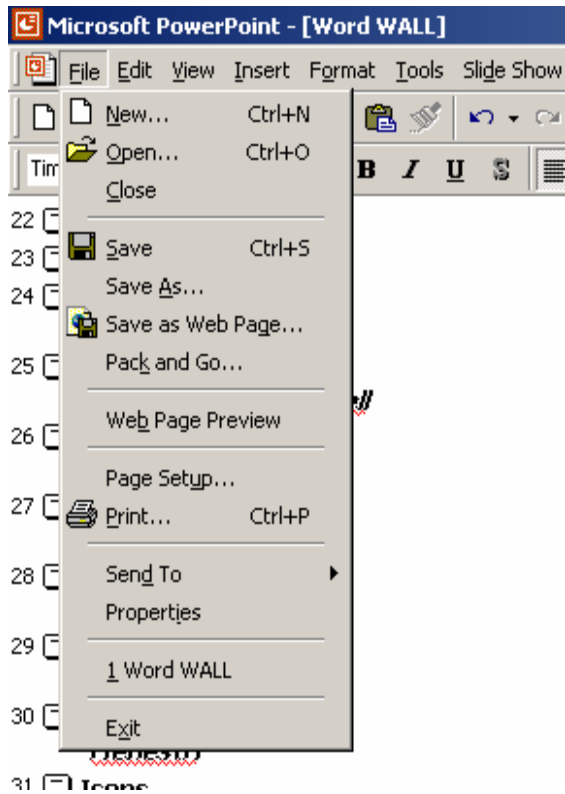
The
program
you are
running is
held within
a window

Icons

The picture representation of the software. You click on these to load your program.



Menu *Bwydlen*



A list of options in which the user can chose what they require.